



Streamline your Supply Chain with

INTUIFLOW



DEMAND DRIVEN
TECHNOLOGIES

FROM PREDICTABILITY TO AGILITY

A New Planning Paradigm for a Resilient Supply Chain

Supply chain performance is a hot topic for today's manufacturers and distributors, but conventional planning techniques are proving inadequate to today's volatile and uncertain market environment.

It's time to challenge the status quo in your supply chain planning.

Empower your business with Intuiflow, a suite of solutions that leverages disruptive Demand Driven Planning Methods and AI/ML to help your business embrace change and power fast, agile business performance.

TOP COMPANIES
LEVERAGE INTUIFLOW

CATERPILLAR[®]



Pierre Fabre

corona

KOCH
INDUSTRIES INC.[™]

 **HUTCHINSON**[®]

• **A P T I V** •

 **MICHELIN**

 | **Coca-Cola** Beverages
Africa

GREIF



WHAT CAN INTUIFLOW DO FOR YOUR BUSINESS?

Connecting your strategy to your operations bi-directionally to sense, adapt and innovate quickly to market changes

Sales & Operations Planning

TACTICAL & STRATEGIC RANGES

Automatically Adapt to Market Changes

Get ahead of volatility with fast, actionable recommendations that analyze sales order data to minimize risk and adapt to change.

Performance analysis and future model projection

Model Configuration

Demand Driven Operating Model

Materials Planning

OPERATIONAL RANGE

Optimize Your Material Flow

Leverage Demand Driven principles and AI/ML to identify strategic inventory positions - so your business always has what it needs to exceed customer expectations.

Scheduling & Execution

OPERATIONAL RANGE

Get End-To-End Visibility

You can't manage what you don't see. Boost performance and improve visibility with data-driven modeling, scheduling and execution capabilities.

INDUSTRIES

Electronics, Consumer Goods, Aerospace, Packaging, Life Sciences, Automotive, Industrial Products, And more...



INTUIFLOW
BY DEMAND DRIVEN TECHNOLOGIES

MATERIALS PLANNING

Supply and Demand, Now in Lockstep

Companies have invested billions in ERP systems — yet inventory turnover rates have been stagnant for more than two decades. Intuiflow helps manufacturers optimize material flow by aligning replenishment not to forecasts but to actual market consumption. How? By leveraging Demand Driven planning principles and AI/ML to quickly identify and replenish strategic inventory positions — so your business always has what it needs to exceed customer expectations.

The Materials Planning module is the materials and inventory management tool in the Intuiflow Suite. It is designed to facilitate a demand pull inventory system consistent with the DDMRP methodology.

It is a revolutionary approach to analyzing the bill of materials, decoupling explosion between strategic stock points, and then providing visibility and management to strategic non-stocked parts through the use of color.



Our key features

- Item Buffers
- Inventory Alerts
- Part Analytics
- Planned Adjustments

are designed to...

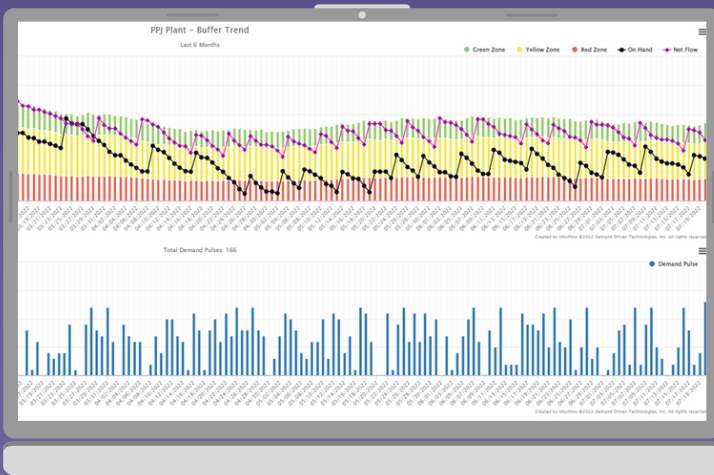
- Achieve constant material availability and reduce bullwhip effect
- Bring visibility to supply and demand issues
- Clearly understand buffer performance and inventory trends
- Adjust buffers to address seasonal and promotional demand trends



INTUIFLOW
BY DEMAND DRIVEN TECHNOLOGIES

MATERIALS PLANNING

Supply and Demand, Now in Lockstep



Buffer Trend displays distribution of items by buffer position along with On Hand vs Target Inventory Trend

Part Number	Revision	Location	Priority	In-Buffer	Date	Inventory Status	Order Qty	Packaging Qty	Packaging Unit	Order	Supply Chain	Demand Allocation	Alert Type
001-1021		Plant	Critical	12%	8/1/2022	✓	10	10	EA	40	75	100	14 Current Inv
001-1022		Plant	Critical	1%	8/1/2022	✓	270	270	EA	330	40	300	18 Material Syn
001-1018		Plant	Critical	36%	8/1/2022	✓	25	25	EA	5	20	10	16 Current Inv
001-1019		Plant	Critical	6%	8/1/2022	✓	1270	1270	EA	0	0	1270	1270 Material Syn
001-1023		Plant	Critical	40%	8/1/2022	✓	45	45	EA	30	0	0	10 Proposed In
001-1001		Plant	Critical	21%	8/1/2022	✓	64	64	EA	30	0	20	16 Proposed In
001-1020		Plant	Critical	0%	8/1/2022	✓	200	200	EA	0	0	200	200 Material Syn
001-1004		Plant	Critical	1%	8/1/2022	✓	1400	1400	EA	0	0	1400	1400 Material Syn
001-1024		Plant	Critical	0%	8/1/2022	✓	100	100	EA	0	0	0	0 Current Inv
001-1003		Plant	Medium	50%	8/1/2022	✓	311	311	EA	311	30	30	311 Proposed In
001-1009		Plant	Medium	31%	8/1/2022	✓	164	164	EA	174	30	0	204 Proposed In
001-1025		Plant	Medium	52%	8/1/2022	✓	340	340	EA	350	0	0	200 Proposed In
001-1022		Plant	Medium	10%	8/1/2022	✓	300	300	EA	800	0	400	400
001-1008		Plant	Medium	10%	8/1/2022	✓	104	104	EA	300	15	200	117
001-1023		Plant	Low	47%	8/1/2022	✓	0	0	EA	40	240	0	280 Proposed In
001-1002		Plant	Low	77%	8/1/2022	✓	0	0	EA	200	30	0	200 Proposed In
001-1009		Plant	Low	11%	8/1/2022	✓	0	0	EA	110	430	70	504
001-1008		Plant	Low	91%	8/1/2022	✓	0	0	EA	42	230	0	282 Proposed In
001-1018		Plant	Low	91%	8/1/2022	✓	0	0	EA	300	40	0	340 Proposed In
001-1019		Plant	Low	47%	8/1/2022	✓	0	0	EA	30	0	0	30

Planner Workbench provides an intuitive view of all critical planning priorities

Alert Type	Part Number	Revision	Location	Alert Type	Alert Severity	Alert Date
Alert Type: Current	201-1021		Plant	Current Inventory	High	8/2/2022
	201-1018		Plant	Current Inventory	High	8/4/2022
	PPJ		Plant	Current Inventory	High	8/12/2022
	201-1016		Plant	Current Inventory	High	8/12/2022
Alert Type: Material	201-1023		Plant	Material Synchroni...	Critical	8/2/2022
	201-1024		Plant	Material Synchroni...	Critical	8/22/2022
	201-1002		Plant	Material Synchroni...	Critical	10/3/2022
Alert Type: Projects	201-1020		Plant	Projected Stock Out	Medium	8/12/2022
	201-1017		Plant	Projected Stock Out	Medium	8/12/2022

Inventory Alerts bring visibility to supply and demand issues

Date	Order	Inventory	Type	Part	Qty	Order Date	Running	Promise Date	Request Date	Late
3/26/2022		PPJ			45		45			
3/26/2022	W0 401200	W0 Demand	PPJ		14	3/21/2022	31			
3/26/2022	W0 401200	W0 Demand	PPJ		30	3/21/2022	1			
3/26/2022	W0 401199	W0 Demand	PPJ		10	3/21/2022	-9			
3/26/2022	889121	Open PO	PPJ		15	3/11/2022	6	3/24/2022	3/21/2022	3/25/...
3/26/2022	W0 401201	W0 Demand	PPJ		12	3/21/2022	-6			
3/26/2022	889122	Open PO	PPJ		30	3/16/2022	24	3/29/2022	3/26/2022	3/29/...
3/31/2022	W0 401197	W0 Demand-SPE	PPJ		24	3/21/2022	0			
8/1/2022	W0 401198	W0 Demand	PPJ		-6	7/21/2022	-6			
8/1/2022	889122	Open PO	PPJ		30	7/21/2022	24	3/31/2022	3/31/2022	8/1/2...
8/1/2022	W0 401203	W0 Demand	PPJ		-8	7/21/2022	16			
8/3/2022	W0 401202	W0 Demand-SPE	PPJ		-16	7/21/2022	0			
8/10/2022	W0 401204	W0 Demand	PPJ		-10	7/21/2022	-10			
8/11/2022	W0 401199	W0 Demand	PPJ		-18	7/21/2022	-28			

Item Activity enables clear visibility to inventory, supply and demand



INTUIFLOW
BY DEMAND DRIVEN TECHNOLOGIES

SCHEDULING & EXECUTION

Don't Let Uncertainty Slow You Down

Change is inevitable, but it doesn't have to damage your business. Increase productivity and improve stability using real-time market data to drive priorities and adapt to new threats and opportunities. User-friendly modeling, scheduling, and execution capabilities help you assess potential changes and make the best use of your resources.

The Scheduling & Execution module in Intuiflow improves due date performance on production orders through market driven prioritization.

This module is focused on creating a level-loaded schedule at the critical control points to drive all other resource schedules. These control points provide visible, real-time signals that drive action and provide relevant information to the business.

Working in synergy with Intuiflow's Material Planning to create a Demand Driven Operating Model, it aligns materials and production to true market demand maximizing customer service and throughput performance.



Makes it easy to:

- Align resources to demand
- Improve due date performance
- Reduce impact of variation
- Access status of work orders

So you can:

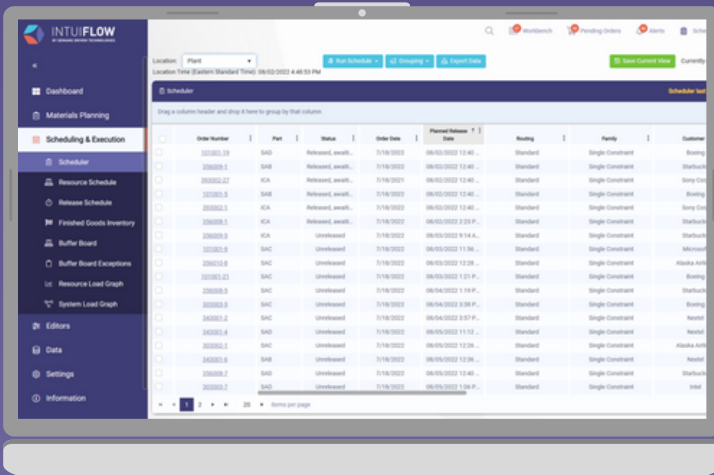
- Increase productivity
- Model and synchronize resources
- Gain critical insights into backlogs
- Improve operational stability



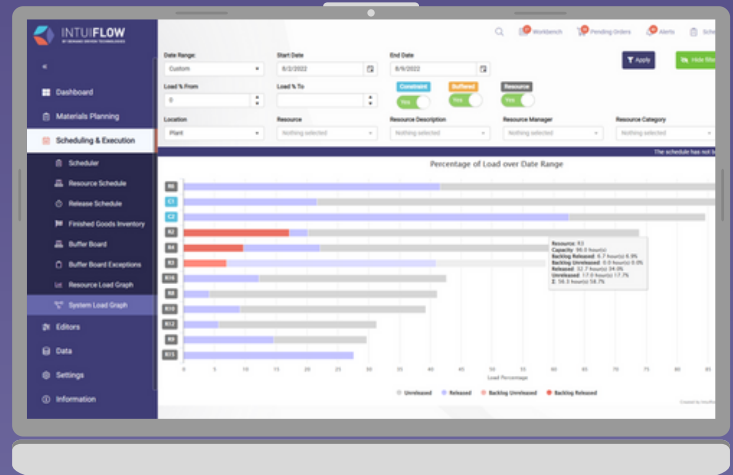
INTUIFLOW
BY DEMAND DRIVEN TECHNOLOGIES

SCHEDULING & EXECUTION

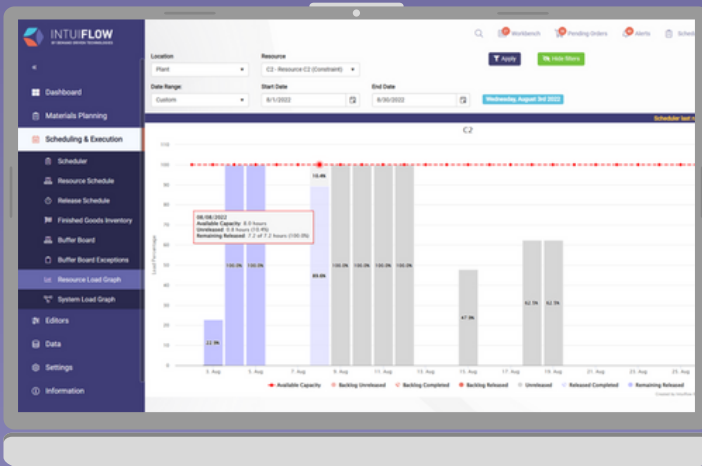
Don't Let Uncertainty Slow You Down



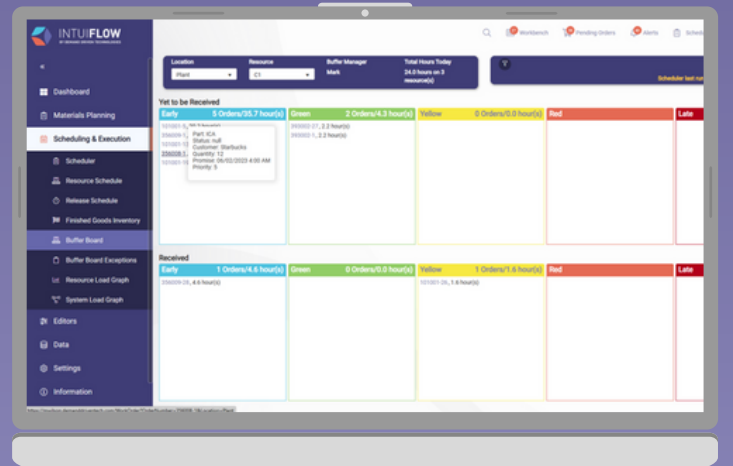
The **Scheduler** improves due date performance while maximizing the leverage of production resources



The **System Load Graph** provides critical insights to the released and unreleased load against all resources in the system



The **Resource Load Graph** provides critical insights to the released and unreleased load against a resource



The **Buffer Board** displays the status of work orders yet to be received at the constraint as well as those that have been received



INTUIFLOW

BY DEMAND DRIVEN TECHNOLOGIES

SALES & OPERATIONS PLANNING

Faster Alignment, Better Performance

Be proactive about top priorities with a single source for insights into shifting market dynamics, production and material constraints, and key supplier requirements. Align your inventory and resource utilization more closely to market demand and build agility into your business.

The Sales & Operations (S&OP) module in Intuiflow enables planning on a medium to long term horizon by utilizing existing operational settings to generate forward looking simulations of buffer activity

It is designed to identify gaps in the existing operating model. This is accomplished by using a forecast as an input for the S&OP tool and then assessing where the operating model may be challenges in fulfilling market demand.

The S&OP tool also provides a variety of reports and alerts that assist in identifying exceptions that may arise in the future. Based on the visibility S&OP provides in these exceptions and gaps, you have the ability to take proactive measures to ensure your operating model is optimally set up to match market conditions.



S&OP provides you with:

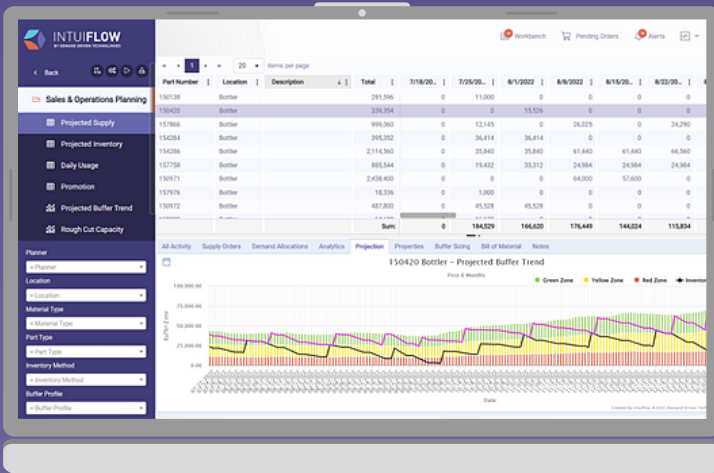
- Consistent view of buffers across the historic, current and future time frames
- Improved management of buffer settings, promotions, seasonality, and product transitions
- Accurate assessment of capacity and potential pre-build requirements
- Rolling forecasts for supplier collaboration



INTUIFLOW
BY DEMAND DRIVEN TECHNOLOGIES

SALES & OPERATIONS PLANNING

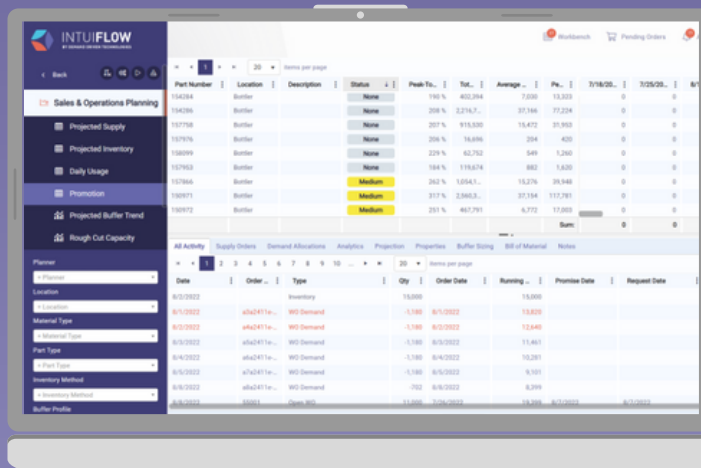
Faster Alignment, Better Performance



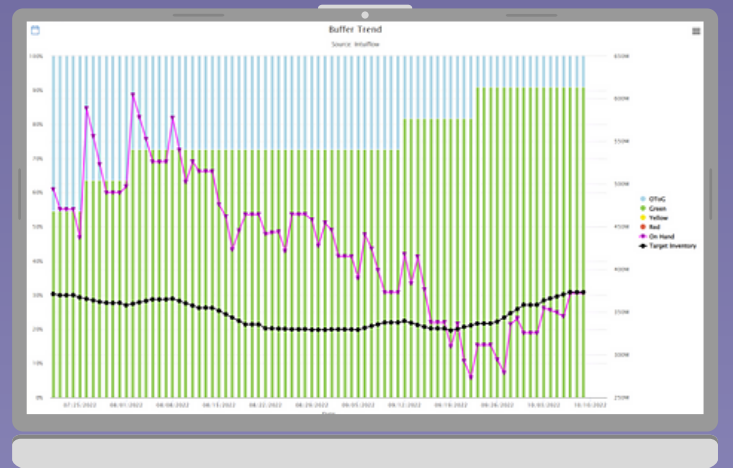
Projected Supply Report highlights expected production or vendor supply order requirements based on DDMRP logic



Projected Inventory highlights potential buffer exposures enabling configuration changes to the Demand Driven Operating Model



Promotion Report highlights periods where demand peaks beyond defined alert thresholds



Projected Buffer Trend Report highlights buffer distribution and projected gap between on hand inventory and target inventory

DEMAND MORE FROM YOUR SUPPLY CHAIN

Modern supply chains are complex. Running them doesn't have to be. Intuiflow makes managing operations more intuitive by delivering actionable insights about resources, inventory, opportunities and risks. Spend less time manipulating data and more time making natural, intuitive decisions about what matters most to your business.



AI/ML Agility At Scale

Drive results across your supply chain by leveraging AI/ML to analyze demand trends and variation patterns to deliver faster and more actionable insights about new threats and opportunities.

Robust ERP Integrations

Our platform integrates seamlessly with all ERPs, including:

SOC2 Compliance State-of-the-Art Security

An agile supply chain is a major competitive advantage and keeping your data secure is critical. That's why we are certified SOC2 compliant.





INTUIFLOW

BY DEMAND DRIVEN TECHNOLOGIES

Results You Can Count On

Demand Driven Technologies was founded in 2011 to help manufacturing and distribution companies build more responsive operations. Our Demand Driven supply chain solutions — the world's first — continue to set an industry standard for reliability and performance.

Inventory
reductions of up to

45%

Lead time
compressions of up to

80%

Customer service
rates of up to

99%

Demand Results

Want to see what your inventory service levels would look like in a Demand Driven environment?

[Request a free simulation](#)

demanddriventech.com
+1 888 - 817- 7822

